

ARCHITECTURAL
GRATES + DRAINS



Marc Newson.

A close-up photograph of a dark metal grate with a hexagonal pattern. The grate is set in a floor, and the background is blurred, showing a modern interior with a stool and a potted plant.

Grate Design.

Marc Newson designed linear
grates by Stormtech.

stormtech.com.au

DESIGN MEETS FUNCTION

Stormtech is excited to offer linear grates designed by internationally renowned designer, Marc Newson.

The **MND Series** incorporates Newson's signature tessellated hexagonal pattern, offering a uniquely creative solution which lends itself to contemporary and traditional environments alike.

Beautifully constructed from 2mm stainless steel, the Marc Newson range is available in five distinctive finishes, to create the perfect architectural aesthetic.



**The
Perfect
Finish**

MND Series

Dimensions

W 65mm x D 25m

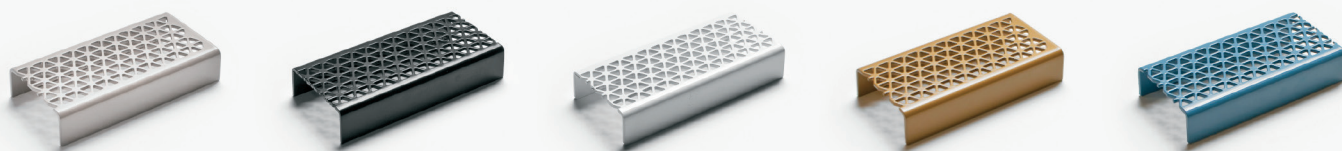
W 100mm x D 20mm

Available Lengths

900mm, 1000mm,

1200mm and 1500mm

Satin
Stainless Steel
Satin Black
White
Pearl Brass
Blue



WELCOME TO ARCHITECTURAL GRATES + DRAINS



Marc Newson.

Bathrooms + Showers
Pools + Surrounds
Thresholds + Doortracks
Special Needs Access

stormtech.com.au

PRODUCT DETAILS

Our website includes detailed assembly + installation information.

TECHNICAL DRAWINGS

We provide complete CAD files for download from our website.

DISTRIBUTORS + STOCKISTS

To find a distributor near you, please visit our website or call our office.

Stormtech Pty Ltd | 22 Norfolk Avenue, South Nowra, NSW 2541 Australia
Telephone +61 2 4423 1989 **Facsimile** +61 2 4423 5552 **Email** info@stormtech.com.au

